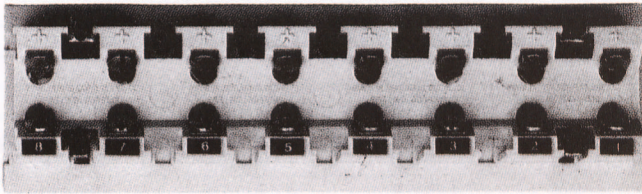
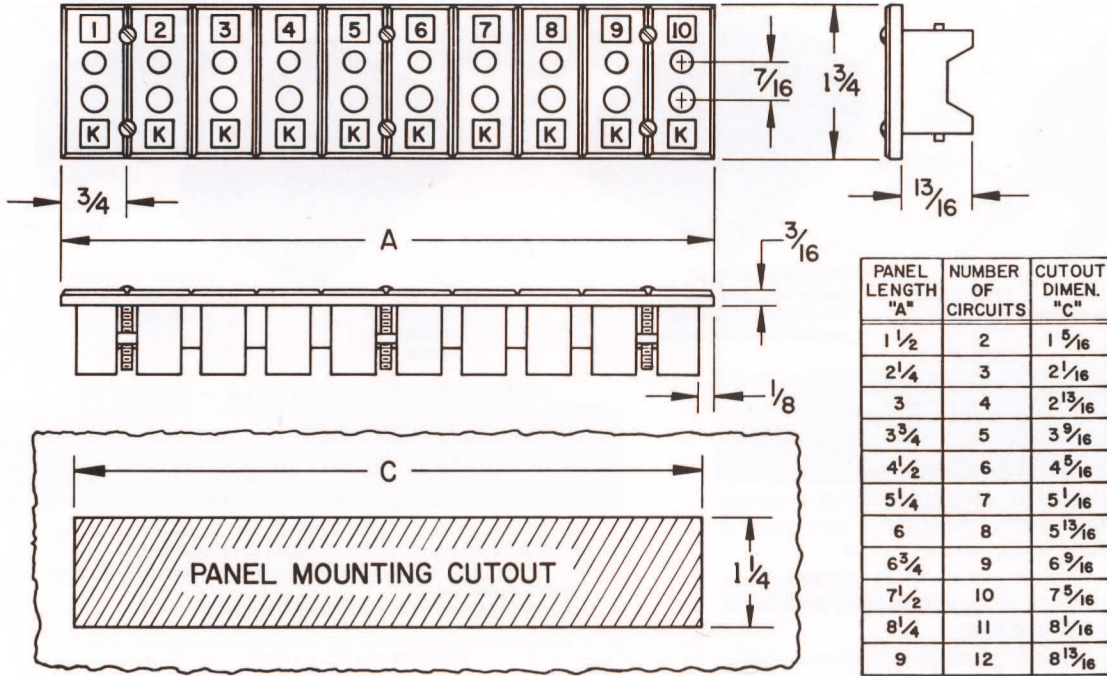
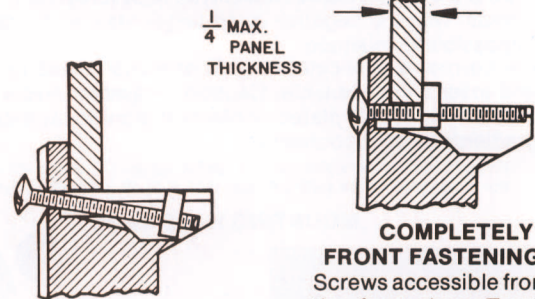


CONNECTORS 2-POLE STANDARD STRIP ANEL



SELF-CONTAINED FASTENING DEVICE



Ready for installation, T-nuts are out of the way at bottom of track.

COMPLETELY FRONT FASTENING
Screws accessible from the front draw T-nuts up molded track and hold them tight against back wall.

- Strippanels available 2 to 12 circuits - Color coded.
- For cutouts — Does not require mounting frame or mounting holes.
- Strippanels can be wired and installed completely from front. Patented self-contained fastening device, "T Nut", is permanently attached, simplifies mounting, holds tight. Patent No. 3046516.
- Thermocouple type and circuit numbers are marked on face of Strippanel with corresponding circuit numbers and polarity identification on the back. Strippanels are numbered starting from "1" unless specified otherwise.
- Strippanels are molded of glass filled thermoset compounds (will not melt) for high strength and dependability. The color coded panels will withstand ambient temperatures to 400° F (205° C) continuous and 500° F (260° C) intermittent. High-Temperature panels (All Hi-Temp panels are color coded red) will withstand ambient temperatures to 800° F (425° C) continuous and 1000° F (540° C) intermittent.
- Inserts are spring loaded collet type to assure positive full contact with the negative insert larger making it virtually impossible to mismatch.

CALIB. MARK	INSERT MAT'L. ALLOY		*COLOR CODE
	POSITIVE	NEGATIVE	
J	IRON	CONSTANTAN	BLACK
T	COPPER	CONSTANTAN	BLUE
K	CHROMEL™	ALUMEL™	YELLOW
N	NICROSIL	NISIL	ORANGE
R	COPPER	#11 ALLOY	GREEN
S	COPPER	#11 ALLOY	GREEN
E	CHROMEL™	CONSTANTAN	VIOLET
CU	COPPER	COPPER	WHITE
WR	COPPER	#11 ALLOY	BROWN
W5	#405 ALLOY	#426 ALLOY	BROWN
(ALL HI-TEMP STRIPANELS)			RED

TM—HOSKINS MFG. CO. *Hi-Temp Color Code-RED

MTI - INDUSTRIAL TEMPERATURE SENSORS

Thermocouples...RTD's...Thermowells..Wire..Cable...Accessories
www.mtisensors.com (972) 436 - 3033 Fax (972) 436 - 2655