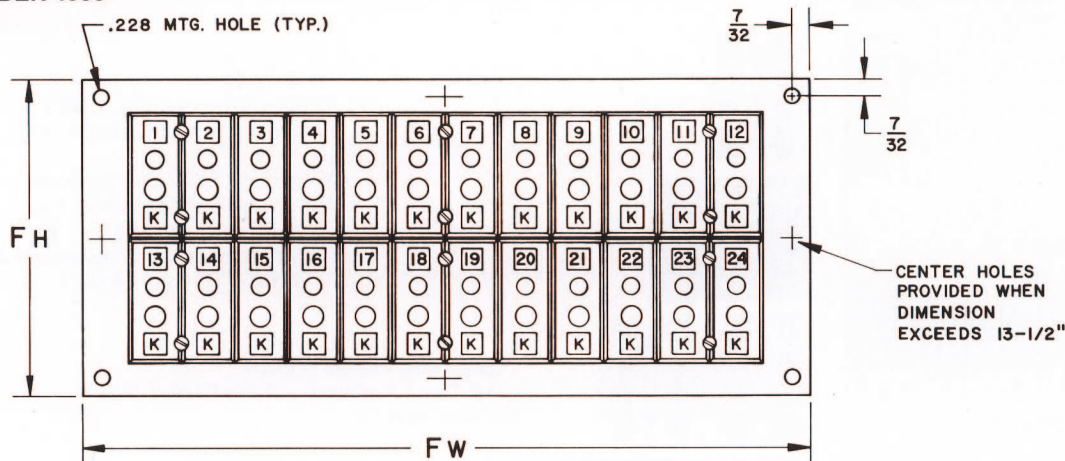


## CATALOG NUMBER 1033



**Dimension for Panel Assembly**  
 $C_H$  AND  $C_W$  ARE MOUNTING CUTOUT DIMENSIONS

NUMBER OF ROWS	CIRCUITS PER ROW	CIRCUITS PER ROW																								PRICE
		2	3	4	5	6	7	8	9	10	11	12	13	14	15	16	17	18	19	20	21	22	23	24		
1	$F_H = 2\frac{3}{8}''$ $C_H = 1\frac{1}{2}''$	2	3	4	5	6	7	8	9	10	11	12	13	14	15	16	17	18	19	20	21	22	23	24	Standard Per Circuit Hi-Temp Per Circuit	
2	$F_H = 4\frac{3}{8}''$ $C_H = 3\frac{1}{4}''$	4	6	8	10	12	14	16	18	20	22	24	26	28	30	32	34	36	38	40	42	44	46	48		
3	$F_H = 6\frac{1}{8}''$ $C_H = 5''$	6	9	12	15	18	21	24	27	30	33	36	39	42	45	48	51	54	57	60	63	66	69	72		
4	$F_H = 7\frac{7}{8}''$ $C_H = 6\frac{3}{4}''$	8	12	16	20	24	28	32	36	40	44	48	52	56	60	64	68	72	76	80	84	88	92	96		
5	$F_H = 9\frac{9}{8}''$ $C_H = 8\frac{1}{2}''$	10	15	20	25	30	35	40	45	50	55	60	65	70	75	80	85	90	95	100	105	110	115	120		
6	$F_H = 11\frac{3}{8}''$ $C_H = 10\frac{1}{4}''$	12	18	24	30	36	42	48	54	60	66	72	78	84	90	96	102	108	114	120	126	132	138	144		
7	$F_H = 13\frac{1}{8}''$ $C_H = 12''$	14	21	28	35	42	49	56	63	70	77	84	91	98	105	112	119	126	133	140	147	154	161	168		
8	$F_H = 14\frac{7}{8}''$ $C_H = 13\frac{3}{4}''$	16	24	32	40	48	56	64	72	80	88	96	104	112	120	128	136	144	152	160	168	176	184	192		
9	$F_H = 16\frac{1}{8}''$ $C_H = 15\frac{1}{2}''$	18	27	36	45	54	63	72	81	90	99	108	117	126	135	144	153	162	171	180	189	198	207	216		
10	$F_H = 18\frac{3}{8}''$ $C_H = 17\frac{1}{4}''$	20	30	40	50	60	70	80	90	100	110	120	130	140	150	160	170	180	190	200	210	220	230	240		

- Strippanels with mounting frames can accommodate virtually any number of circuits.
- One-piece mounting frame is made of 3/32" thick rigid steel with flat black finish.
- For specifications see Strippanel 1032 section.
- For frame sizes other than those in table consult Factory.
- Horizontal rows are assumed unless specified vertical by the suffix "V" which are numbered from top to bottom: e.g. 1033V-4 x 12-48-K.
- Strippanels with mounting frames will withstand ambient temperatures of 400°F (205°C) continuous and 500°F (260°C) intermittent. Hi-Temp panels will withstand ambient temperatures to 800°F (425°C) continuous and 1000°F (540°C) intermittent.

### TO ORDER:

1. Give Strippanel No. → 1033 - 4 x 12 - 48 - K
2. Specify No. of Horizontal Rows →
3. Specify No. of Circuits per Row →
4. Give Total Number of Circuits → Price per circuit
5. Specify ANSI Thermocouple Code →
6. For Vertical Rows Add Suffix "V"  
e.g. 1033V-4x12-48-K
7. For Hi-Temp Strippanel Frame Add Prefix "H"  
e.g. H-1033-4x12-48-K  
Hi-Temp. Price per circuit.

\*Use discount schedule on next page for strippanels with mounting frames.

## MTI - INDUSTRIAL TEMPERATURE SENSORS